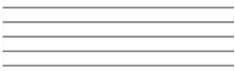
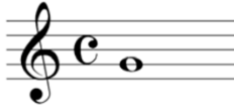


**EXAMPLES QUESTIONS ENGLISH
WRITTEN ENTRANCE EXAMB
BACHELLOR, TONMEISTER RDAM**

1.
Name four instrument groups and an instrument from each in a classical symphony orchestra

2.
Where does the tone notated sound on a standard alto sax in e-flat



3.
Describe the difference between a balanced and unbalanced signal

4.
Describe the terms: "sample-rate", "bit-rate" and "bit-depth":

5.
Which frequency spectrum can a normal hearing human approximately hear?

6.
How will you characterize the sound of the frequency range around 2.500 Hz?

7.
Give a short description of the following persons:

George Massenburg: _____

Daniel Lanois: _____

Count Basie: _____

8.
Name four different examples of a possible directional characteristic of a microphone and describe the differences

**EXAMPLES QUESTIONS ENGLISH
WRITTEN ENTRANCE EXAMB
BACHELLOR, TONMEISTER RDAM**

9.

Which types directional characteristics does microphones used in the following standard stereo-pairs have

AB: _____

XY: _____

ORTF: _____

MS: _____

10.

Name four companies who produces microphones for professional music production